

UTM

Features

Type U is a robust element consisting of 2 solid U-shaped steel parts securely bonded to the rubber section.

To achieve higher flexibility, two holes in the rubber are provided between the metals. The upper metal plate is fixed to the underside of the machine foot or base plate by means of a bolt, while the bottom plate should be secured to the floor by an expansion bolt. For certain applications a dowel pin may be adequate.

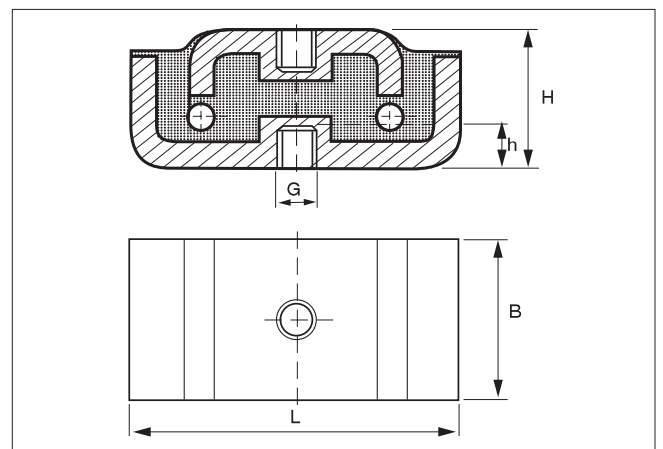
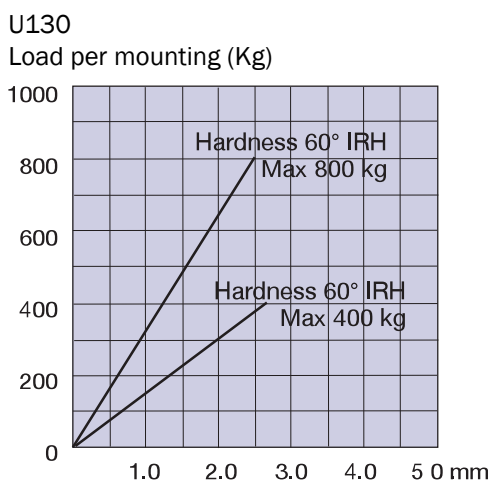
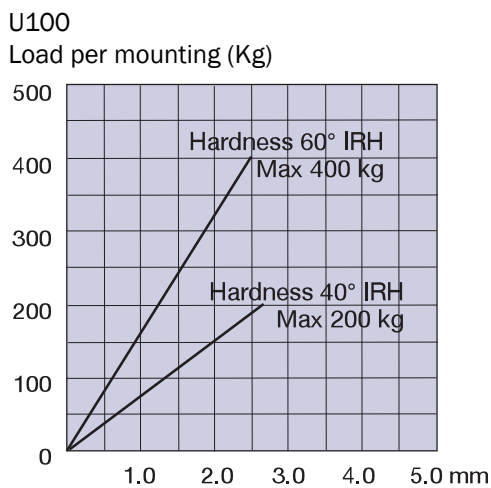


Novibra® type UTM

Type U provides for a stable machine installation and is particularly suitable for the vibration isolation of heavier machinery with relatively high interfering frequencies.

Typical applications can be found on:

- ▼ Presses
- ▼ Church bells
- ▼ Punches
- ▼ Transformers
- ▼ Other heavy, high-speed Machines
- ▼ Printing machinery
- ▼ Woodworking machines
- ▼ Weaving machines



Type	Drawing no.	Part no.		Dimensions in mm					M-Max (Kg)		Weight (Kg)
		40°IRH	60°IRH	B	L	H	h	G	40°IRH	60°IRH	
U100	17-4351	10-00001	10-00002	50	100	42	12	M12	200	400	0,650
U130	17-4352	10-00003	10-00004	70	130	54	12	M12	400	800	1,318